

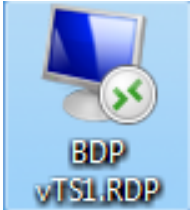
CLASS

Continued Learning And Software Skills

Editing Existing "BDP vTS1" Icon On Windows XP

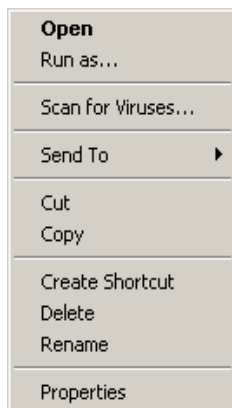
EDITING EXISTING "BDP vTS1" ICON

If you have already created your Remote Desktop icon recently, you will need to edit the icon. The following is an example of the icon:

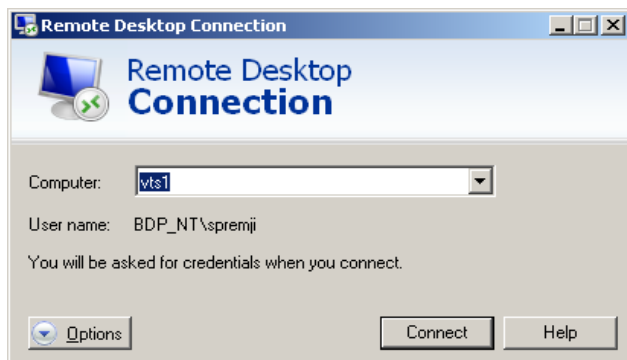


EDITING EXISTING "BDP vTS1" ICON

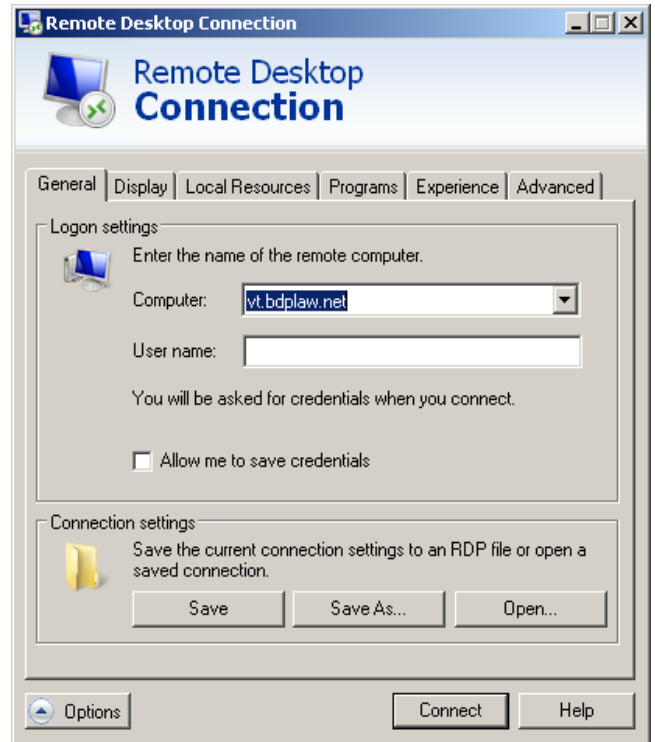
1. Click your Right-Mouse button on the icon as illustrated just above. The following will appear:



2. Click on the "Open" menu option and the following will be displayed:



From the above illustration, click on the "Options" button and the following on the right column will be displayed:



From the illustration above, type "vt.bdplaw.net" in the "Computer:" field and then click the "Save" button. You may proceed to "Connect" or exit dialog box